



Planmeca ProSensor *sense the usability*

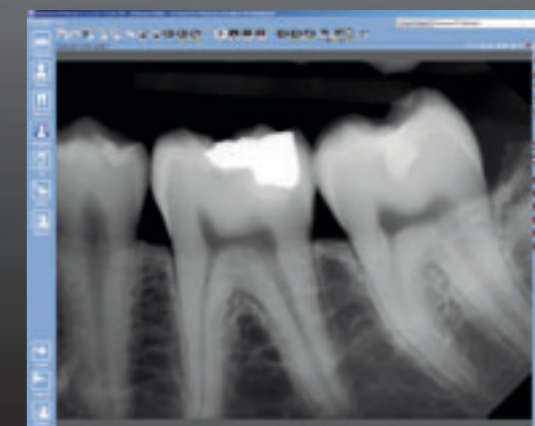


*Visit IDS 2009.
Meet us at stand
G/H 010/011, hall 11.1.*



Planmeca Oy, Asentajankatu 6, 00880 Helsinki, Finland
tel. +358 20 7795 500, fax +358 20 7795 555
sales@planmeca.com, www.planmeca.com

*Cutting-edge
image quality*



PLANMECA

Planmeca introduces new, innovative intraoral sensor system, Planmeca ProSensor. Planmeca ProSensor is a unique combination of high-end patient centric design, usability, and durability, assuring smooth workflow and patient safety. The sensor is hermetically sealed, and the intelligent design of the sensor maximises the active imaging area. Rounded edges on the sensor give extra comfort for the patient. The sensor is attached to an elegant interface box with a magnetic connector – a new application in dental markets – for an easy and assisted connection between the sensor and the interface box. Planmeca ProSensor comes in three different sizes, each identified with a symbol on the magnetic connector. These features, combined with LED light on the interface box indicating the state of the sensor system, ensure top image quality and success with every image.